



Honda Atlas Cars (Pakistan) Limited
43 km Multan Road, Manga Mandi, Lahore
www.honda.com.pk | www.facebook.com/hacpl

HONDA
The Power of Dreams



CITY
MORE
THAN
AN
ICON!





Side Mirrors with Turn Indicators



Modern & Elegant Headlights



Exquisite Chrome & Black Front Grill

INIMITABLE CHARIZMA

Every upgrade bringing with it a fresh wave of intuitive technology and exciting design. The front grill, cutting edge headlights and turn indicators that defines a bold character. One that is class defying in features and is the statement of a higher league.



Rear Arm Rest with Cup Holder



Console Box with Front Arm Rest

FINESSE COMFORT

The impeccable interior of City has been the man maximum, machine minimum philosophy. A grand cabin space with ample legroom and an ergonomically designed cockpit, all come together to make your ride truly classy.



Modern & Elegant Rear Light



Magnificent Door Protectors



Rear Reflectors with Clear Car Visibility



High Mount Stop Lamp

ABSOLUTE CLASS

The sheer aristocracy of sedan culture that city represents, comes thrillingly alive in its features, the fancy rear reflectors, the elegant back light and the dashing stop lamp. It is an inspired collection of fine points that make an impressive stance on the road.



Ergonomic AC Knobs



Speedometer with Blue Optitron



Hi-Tech Integrated Tuner



Power Window and Central Locking

COMFORT REDEFINED

Honda pursues an easy to see/ easy to use advanced interface by adopting advanced technologies. Experience superior ergonomics with the asymmetrical dashboard, all of the controls are intuitively placed and can be accessed easily. Each of these are designed with an intent to keep your driving safe and convenient.

CITY 1.5L



Chrome Door Handles



Body Colored Mud Flaps



Keyless Entry



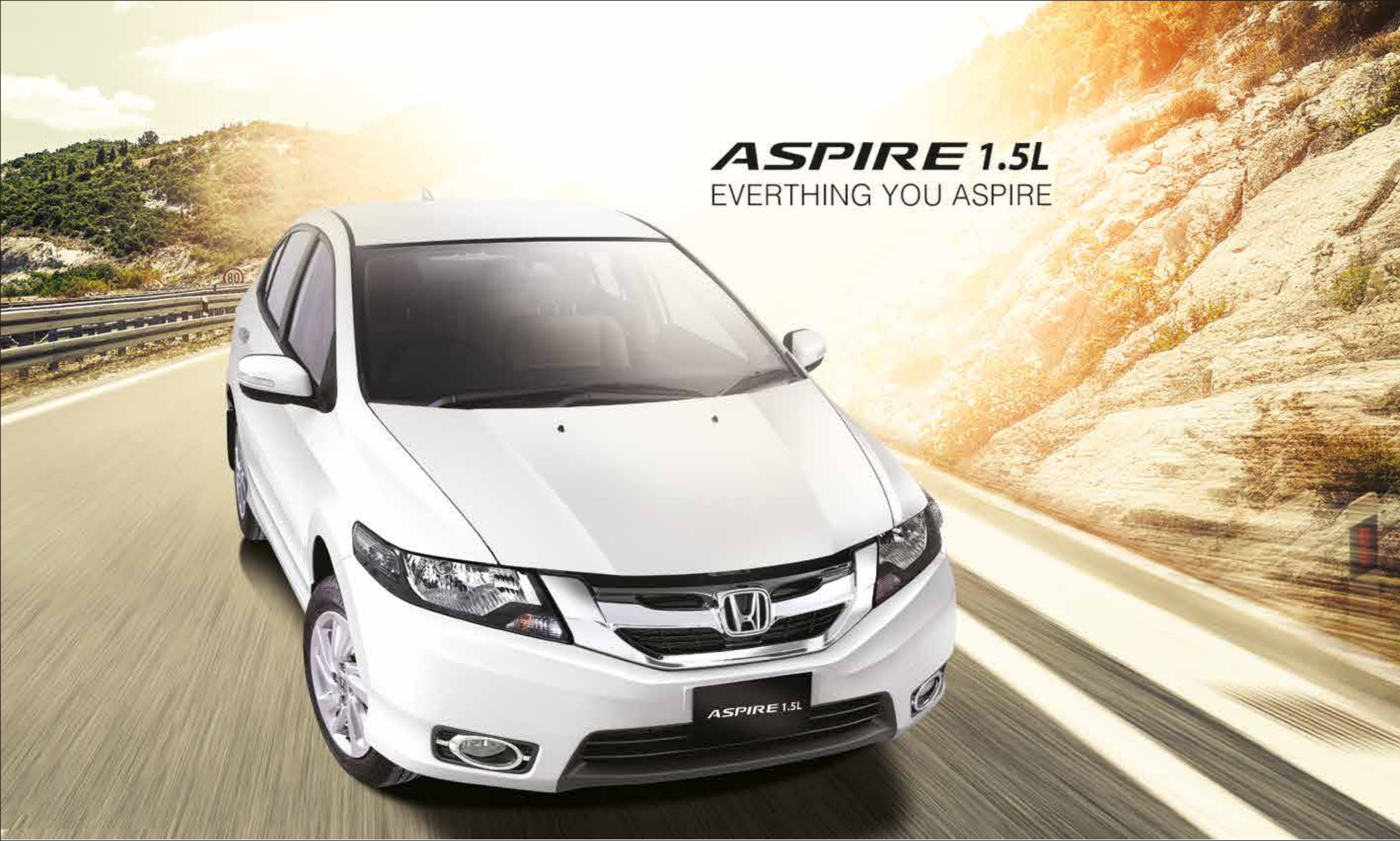
Immobilizer



Shark Fin Antenna

MATCHLESS EASE

Honda city is where ease and luxury go together. Its style matches the convenience that it offers. Adding on to the style these features like body colored mud flaps, keyless entry and immobilizer make it look charming.



ASPIRE 1.5L
EVERYTHING YOU ASPIRE



New 15" Alloy Rims

DRIVE THE CHANGE

One look at the Aspire and you will be convinced about the influence it will have on your social circles. The elegant fine cut Alloy wheels, the dashing chrome fog lights, shark fin antenna and Iconic Aspire emblem define a true sedan charm.



Chrome Fog Lights



Shark Fin Antenna



Iconic Aspire Emblem



NAVIGATION & MULTIMEDIA

It is innovation at its most entertaining and information in its most smart and connected avatar. This screen is here to keep occupants connected to their music, their social networks and their digital lifestyle through intuitive and easy to use controls while minimizing driving distraction.



Fascinating Navigation System



Hi-Grade Seats with Compelling Beige Interior



Extravagant Inner Handle

CAPTIVATING INSIDE OUT

The Honda City's expressive design is carried forward on the inside. It features premium interiors with rich leather and contrast stitching. The seats come with ample legroom in both the front and back rows. Together with a high driving position that offers wraparound panoramic visibility.

POWER & COMFORT

Get behind the wheel of this breakthrough vehicle and feel the exhilaration of powerful strength and soothing relaxation in action. Its intelligent i-VTEC engine combines strong power and low fuel consumption, teamed with a class-surpassing 5-speed automatic transmission, Drive-By-Wire engine and transmission control, and newly designed suspensions. The result is rapid acceleration for strong starts, assured passing power in highway driving, and a special sense of pleasure in stress-free power and comfortable cruising. Experience rare City Aspire driving enjoyment at the heart of innovative performance.

i-VTEC

1.3L
Maximum Power:
 73KW [100PS]
 @ 6,000 RPM
Maximum Torque:
 128 N.m [13.0kg.m]
 @4800 RPM

1.5L
Maximum Power:
 88KW [120PS]
 @ 6,600 RPM
Maximum Torque:
 128 N.m [13.0kg.m]
 @6,600 RPM



DRIVE BY WIRE (DBW)

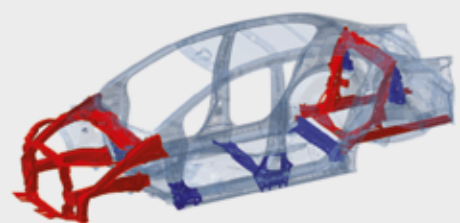
Drive-By-Wire supplies comprehensive engine and 5AT control, as well as reliable acceleration and linear driving performance in the regular speed range.

CLASS-SURPASSING 5-SPEED AUTOMATIC TRANSMISSION

The 5-speed AT maximizes engine output and also ensures quietness at high speeds. 5th gear provides a fuel-efficient overdrive setting.



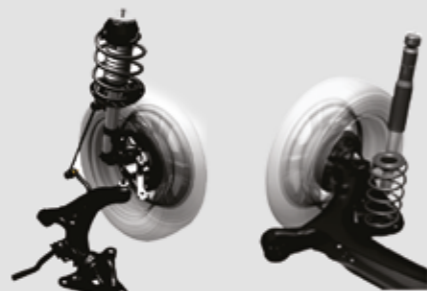
LIGHTWEIGHT HIGH-RIGIDITY BODY FOR OVERALL EASE



■ Highly rigid body structure ■ Highly efficient coupling structure

Body structure combines coupling efficiency with optimized fore-aft rigidity for a high-level balance of riding comfort, steering stability, and cabin quietness.

NEWLY DESIGNED SUSPENSION SYSTEM



Designed for a supple feeling, the suspension provides a comfortable riding sensation for all.

5.3M MINIMUM TURNING RADIUS (WITH 15-INCH TIRES)

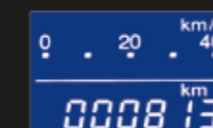


The vehicle displays a fusion of superb maneuverability and class-leading cabin spaciousness.

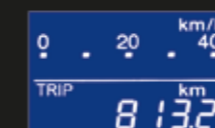
SAFETY & ECOLOGY It's by Choice not by chance

EXCELLENT FUEL EFFICIENCY PERFORMANCE

A convenient information display supplies useful data on current and average fuel efficiency and estimated travel distance before refueling. Positively affecting the driver's psychology, the display provides strong reinforcement for fuel-efficient motoring and makes it easier to drive economically.



Odometer



Tripmeter



Average fuel consumption

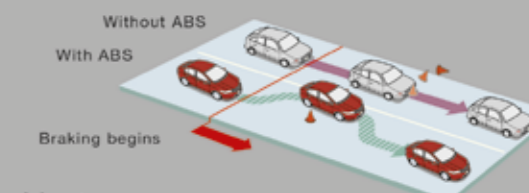


Remaining distance range



ABS AS A STANDARD FEATURE

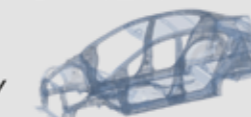
ABS (Anti-Lock Braking System) helps prevent the wheels from locking in emergency braking situations and on slippery road surfaces. It increases vehicle stability and control during deceleration to help you avoid accidents.



G-FORCE CONTROL TECHNOLOGY

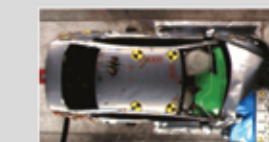
Honda's original technology controls various forces (G) that are generated upon impact, and helps reduce injury.

BODY DESIGNED FOR COLLISION COMPATIBILITY WITH OTHER VEHICLES AS WELL AS GREATER PEDESTRIAN SAFETY



The new City Aspire body is designed to enhance passenger protection through compatibility with other vehicles, reducing damage incurred by impact. This design prevents the vehicle's shock-absorbent component from jolting out of alignment with that of the other vehicle. At the same time, this design disperses collision impact over as wide an area as possible for greater efficiency of impact absorption and greatly reduced stress on the cabin.

HIGH-LEVEL SAFETY PERFORMANCE IN COLLISIONS FROM ALL DIRECTIONS



Honda performed comprehensive crash testing in pursuit of real-world vehicle occupant safety performance. The new City Aspire was tested in full frontal collisions with a barrier at 55km/h, frontal offset collisions at 64km/h, side collisions at 50km/h, and rear-end collisions at 50km/h. All these crash tests showed that the vehicle reduces injuries to occupants and preserves survival space.

For those who still want more

OPTIONAL
FEATURES



Fog Lights
RS: 7,000/-



Navigation & Multimedia
RS: 57,500/-



Rear Speakers
RS: 3,999/-



CITY

UTILITY PACKAGE

Floor Mats, Trunk Tray and Door Visors that add class to perfection **Honda Access**



Door Visors
Customized to keep every corner covered. These visors are designed to keep the heat out and provide a comfortable ride.



Trunk Tray
A Removeable add-on that makes it very easy to keep the trunk clean and tidy.



Floor Mats
From the feet up, these exquisite floor mats are easy to wash, have a very long life and are completely odorless.

PERFECT
BUNDLE
FOR YOUR
CAR
RS. 20,000/-

Ultimate value for money



Excellent Fuel Efficiency & Utmost Performance

Environment friendly Euro-4



The only car manufacturer in Pakistan providing Euro-4 emissions standard



Low Cost of Ownership through Competitive Cost of Honda Genuine Parts & Services



Longest Warranty Period

SPECIFICATIONS/FEATURES

Model	1.3L City	1.5L City	1.5L Aspire
Engine			
Type	SOHC, 16 valve 4-Cylinder, i - VTEC		
Fuel Supply System	EFI (Electronic Fuel Injection)		
Bore / Stroke (mm)	73 x 80	73 x 89.4	
Displacement cc (cm ³)	1,339	1,497	
Compression Ratio	10.5 : 1		
Maximum Horsepower kW(PS) / rpm	73 (100) / 6,000	88 (120) / 6,600	
Maximum Torque N.m (Kg.m) / rpm	128 (13.0) / 4,800	145 (14.8) / 4,800	
Drive By Wire (DBW)	O		
Transmission			
Transmission Type	Synchronized 5 Speed Forward - 1 Reverse Compact 5-Speed Automatic (Progressive Shift Management Technology)		
Steering			
Gear Type	Rack & Pinion		
EPS (Electronic Power Steering)	O		
Dimensions			
Overall Length (mm)	4,395		
Overall Width (mm)	1,695		
Overall Height (mm)	1,480		
Wheel Base (mm)	2,550		
Tread (Front / Rear) (mm)	1,492 / 1,475		
Ground Clearance (mm)	160		
Turning Radius (m)	5.3		
Fuel Tank Liters	42		
Suspension			
Front	MacPherson Strut Suspension with Stabilizer		
Rear	Torsion Beam Axle with Stabilizer		
Braking System			
Anti-Lock Braking System (ABS)	Front	Disc	
	Rear	Drum	
Brake Assist (Set with ABS)	O		
Tires / Wheels			
Tire Size	175 / 65 R 15		
Wheel Size	15 X 5 J		
Wheel Type	Steel Wheel	Aluminium Alloy (New Design)	
Spare Wheel	Steel		
Exterior			
Chrome & Black Front Grill	O		
Body-Colored Bumpers	O		
Door Protector	O		
Fuel Lid (Push-open)	O		
Body Colored Mud Flaps	O		
Door Handles	Body Color	Chrome	
Turn Indicator on Side Mirrors	O		
Body-Colored Door Mirrors	O		
Multi-Reflecting Crystal Head /Rear Lights	O		
Exhaust Pipe Finisher	O		
Roof Antenna	Micro	Shark Fin	
Fog Lights	Optional	Chrome	

SPECIFICATIONS/FEATURES

Model	1.3L City	1.5L City	1.5L Aspire
Interior / Convenience			
Interior Color	Beige		
Interior Wooden Panel	x		O
Electrically Adjustable Side Mirrors	O		
Power Door Locks	O		
Power Windows	O		
Power Steering With Tilt (EPS)	O		
Steering Wheel	3 -spokes		
Steering Panel	Silver		
Tacho Meter	O		
Fuel Consumption Display	O		
Remaining Fuel Display	O		
Keyless Entry	O		
Navigation / Multimedia System	Optional		O
New integrated Tuner	O		x
Speaker System	2 - speakers		4 - speakers
Rear Speakers	Optional		O
Foot Rest	O		
Day / Night Mirror	O		
Sunvisor with Vanity Mirror	O		
Windshield Wipers (Intermittent)	O		
Air Conditioning System	O		
Rear Windscreen Defroster / Defogger	O		
Seat Cover Material	Fabric		Hi Grade
Seat Back Pocket (Assistant Side)	O		
Rear Seat Head Rest / Arm Rest	O		
Rear Arm Rest with Cup Holder	O		
Front Console Box with Arm Rest	O		
Cup Holder	O		
Ashtray (Portable)	O		
Door Pockets	O		
Cigarette Lighter	O		
Glove Compartment	O		
Trunk Light	O		
Trunk Capacity Liters	506		
Upgraded Black Seats	x		Optional
Safety			
Emission Standard	Euro - 4		
High Mount Stop Lamp	O		
Seatbelts	Front / Rear	O / O	
Adjustable Shoulder Anchor	Front	O	
Key Alarm	O		
Immobilizer	O		
Driver's Seatbelt Warning	O		
Door Open Warning	O		
Trunk Open Warning	O		
Fuel Consumption Warning	O		
Lights-On Reminding Alarm	O		
Door Beams	O		
Crumple Zones	O		
G - CON	O		

EXPRESS YOUR PERSONALITY



Urban Titanium



Taffeta White



Lunar Silver Metallic



Modern Steel Metallic



Brilliant Sporty Blue Metallic



Crystal Black Pearl



Carnelian Red