



1 9 9 7

ESCORT



IT'S NEW AND IT'S SMART WITH A STORY TO TELL.

THE **new** **escort.**

SMART



GOING



The popular Ford Escort has been redesigned and re-engineered to give you even more for your money. There's 25% more power. Improved steel safety cell construction. 100,000-mile tune-up interval (under normal driving

conditions with routine fluid and filter changes). A user-friendly integrated control panel. Even the stereo system gets a boost with premium speakers. It's been smoothly restyled, too. More value in a trusted name. Smart going.

ESCORT SPORT

ALL DRESSED UP *And* ANYWHERE TO GO.....



When decked out with the attractive sport package, the Escort LX sedan takes on an undeniably stylish attitude. Outside, a bright oval-tipped exhaust pipe and rear liftgate spoiler complement 14" aluminum wheels.

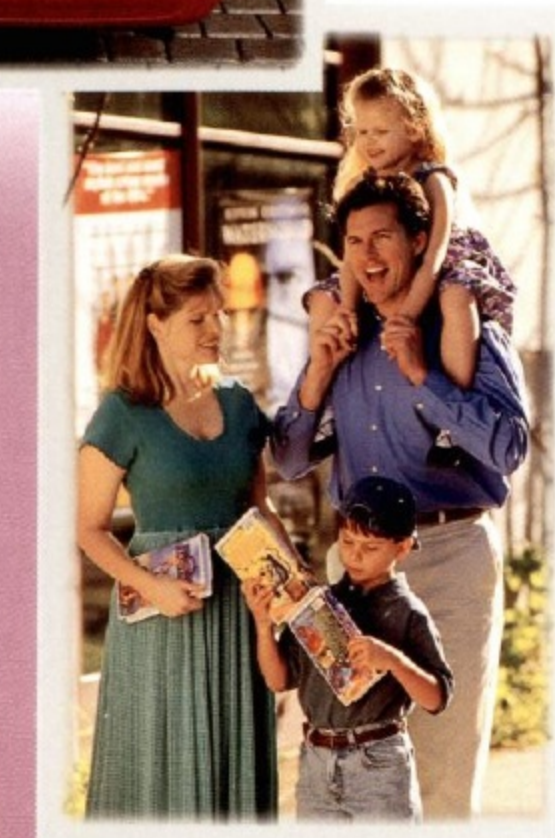


Special "Sport" badges are included. Inside, specially upholstered seats feature rear integrated head restraints. Instrumentation includes a tachometer. The sport package is designed to enhance Escort's smart, sleek new look.

ESCORT
wagon *Smooth Outside*



BIG inside...



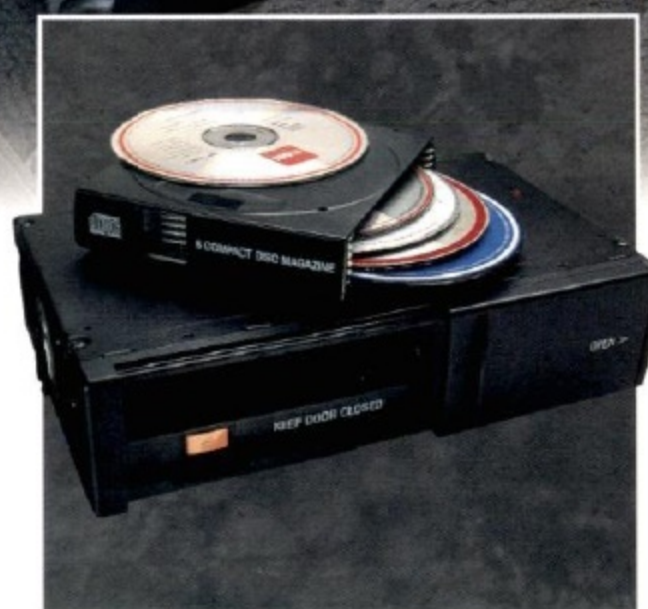
The new wagon, besides sharing all the impressive performance, convenience and comfort attributes of the Escort sedan model, provides 63.4 cubic feet of cargo area when the rear seat backs are folded down. The split-fold feature (shown at left) lets you fold both backs down when cargo takes priority, or just one for cargo and passengers.

COMFORTABLE.



The optional trunk-mounted 6-disc changer includes the premium sound system. LX sedan only.

The LX 60/40 split/fold rear seat provides exceptional passenger/cargo versatility.



Trunk-Mounted 6-Disc Changer



Split/Fold Rear Seat

Versatile.

And then Some.



Adjustable Belt



Rear Cup Holder

The height of the front shoulder safety belt is adjustable for maximum individual comfort.

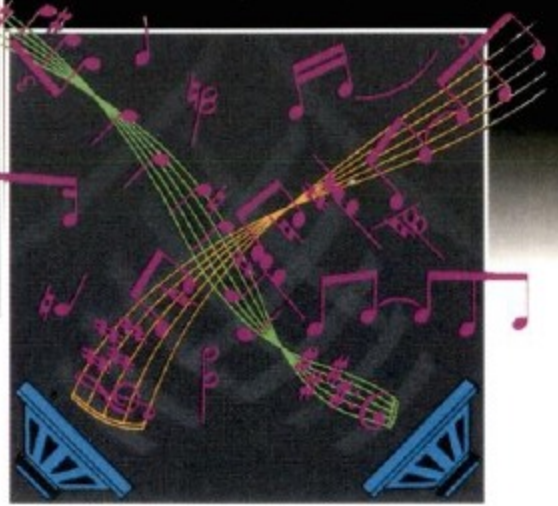
Escort's rear cup holder is conveniently located and can hold larger-sized juice bottles.

A Dash of convenience



Friendly Features

The integrated control panel combines climate, audio and clock controls into one user-friendly unit.



Premium Speakers

Escort's premium speakers offer improved reproduction of both high and low frequencies.

Escort's new instrument panel is designed to help make your driving more pleasurable by making things more convenient. An integrated control panel, unique in Escort's class, delivers practicality and contemporary style. A full console is standard and many frequently used functions are column mounted for ease of reach and operation.



100,000

Escort's 2.0L engine can go 100,000 miles between scheduled tune-ups (under normal driving conditions with routine fluid/filter changes).

A split-port induction system combines increased power with cleaner burning benefits.



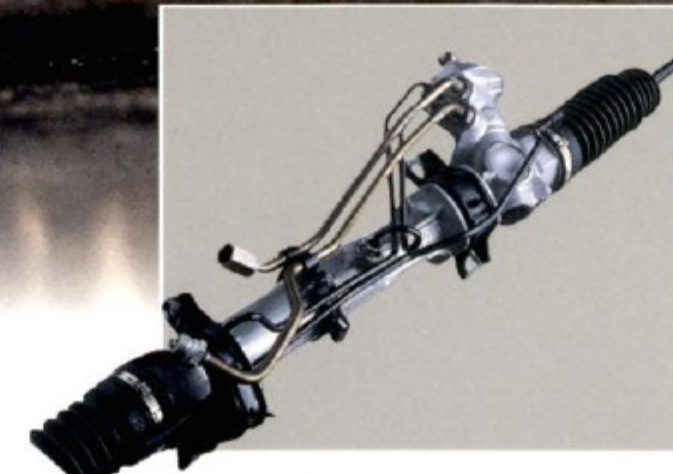
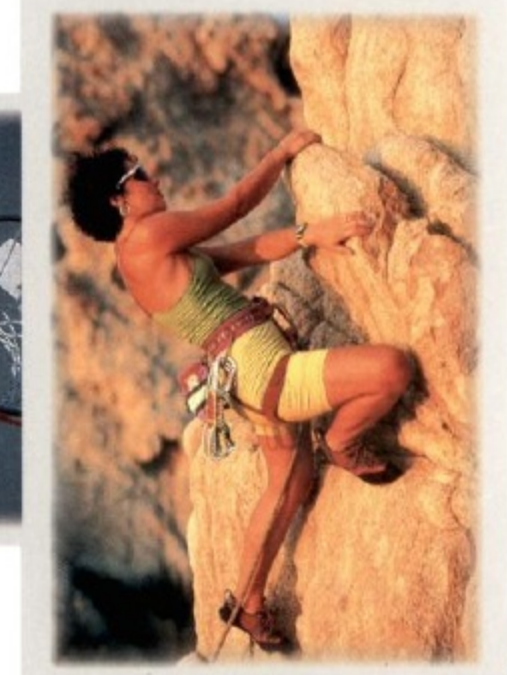
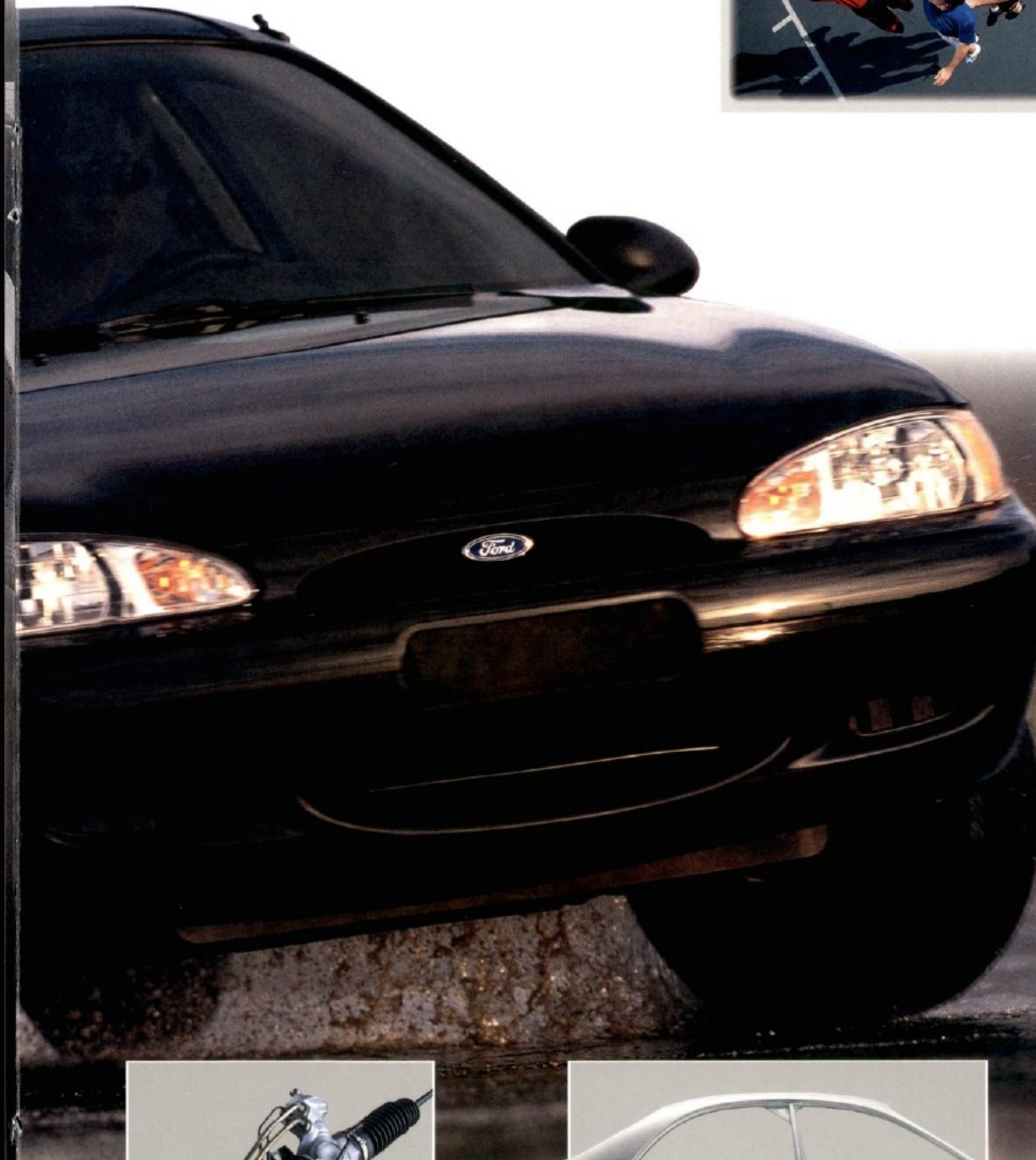
25% MORE POWER

means

MORE DRIVING ENJOYMENT...

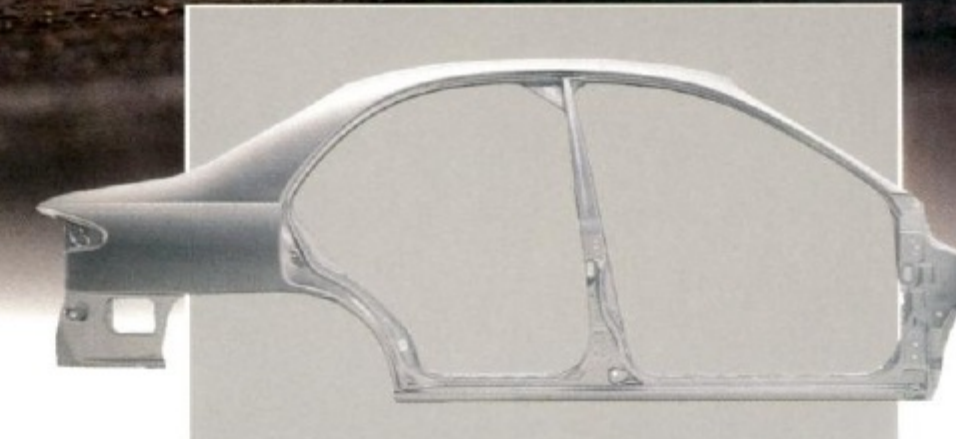


With 110 hp, Escort's 2.0L engine is fully 25% more potent than its predecessor. The new split-port induction system boosts power at engine speeds over 3,000 rpm by increasing the fuel/air mixture to the cylinders. Below 3,000 rpm, the mixture is efficiently administered at normal levels for traditional 4-cylinder economy (see your dealer for EPA fuel economy estimates).



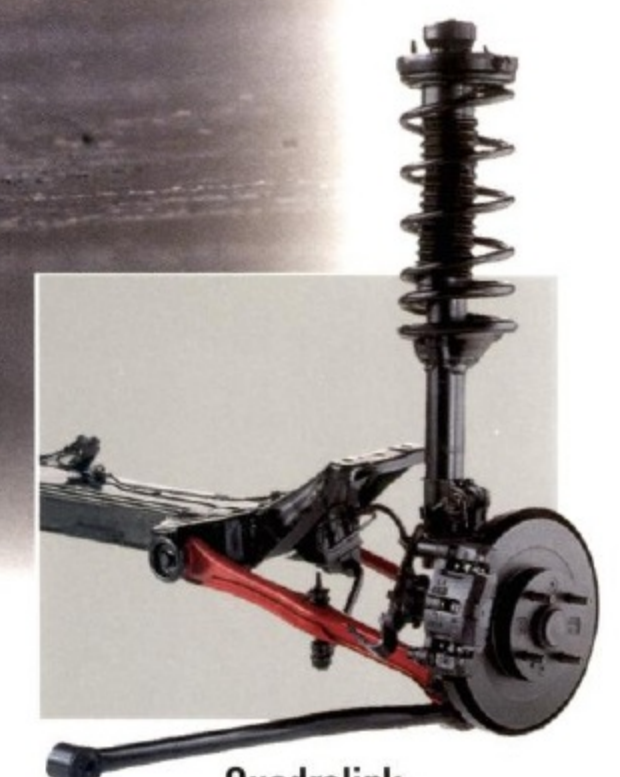
Power Rack-and-Pinion Steering

Escort's precise rack-and-pinion steering system is power assisted with a 17:1 steering ratio for ease of maneuverability.



One-Piece Bodyside

Escort's bodyside is stamped from a single piece of metal rather than using the traditional multi-piece process. The result is increased body rigidity for a smoother, quieter ride.



Quadralink Independent Suspension

The advanced-design quadralink independent rear suspension system provides excellent control during acceleration, cornering and braking. Front and rear stabilizer bars are standard.

Designed to be **Safer.** **MO** **RE** **Secure.**



Child Safety

An integrated safety seat is optional with LX; childproof rear door locks are standard with all models.



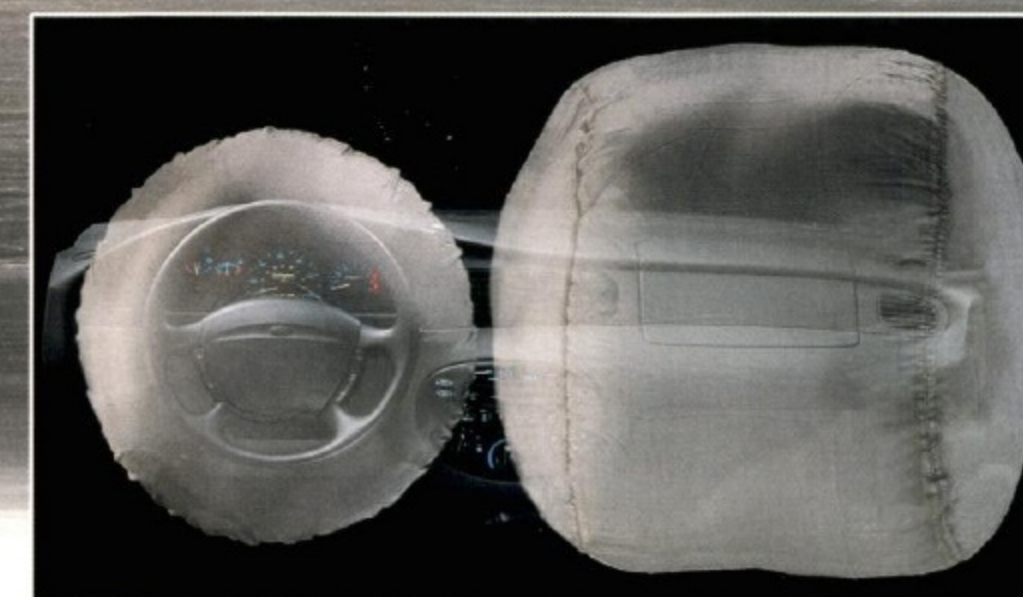
Safety Cell Construction

A new level of safety is achieved with improved safety cell construction that meets the new 1997 Federal dynamic side impact requirements. It includes protective side door intrusion beams.



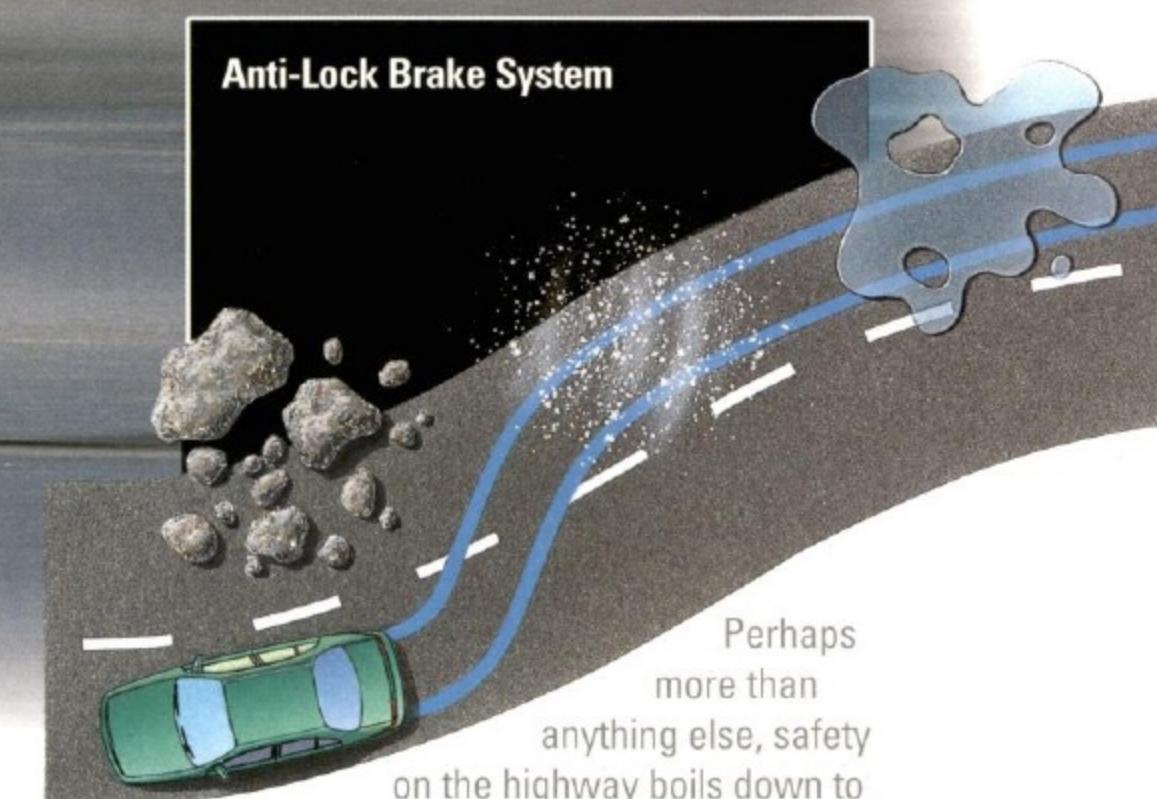
Remote Keyless Entry

The available driver's door remote keyless entry, a segment exclusive, locks and unlocks the driver's door and trunk/liftgate.



Standard Dual Air Bags

Air bags for both the driver and front passenger are standard with all models. Remember to wear safety belts at all times.



Anti-Lock Brake System

Perhaps more than anything else, safety on the highway boils down to control. Escort's anti-lock braking system, now available with all models, provides greater steering control while braking under most adverse driving conditions, even on wet or slippery surfaces.

OPTION PACKAGES, **features** &

Preferred Equipment Packages

Escort Sedan



Standard

The Escort Sedan's long list of standard equipment includes such features as:

- Electronic AM/FM stereo radio with premium speakers
- Power rack-and-pinion steering
- Driver and front passenger air bag supplemental restraint system
- Solar tinted glass
- Variable-interval windshield wipers

Escort LX Sedan



317A

- Rear window defroster
- Group 1: CFC-free air conditioning, driver's door remote entry

318A

- All the features included in Package 317A
- Group 2: All-door remote entry with perimeter anti-theft, power door locks, power windows and dual power mirrors

Escort LX Wagon



317A

- Rear window defroster
- Group 1: CFC-free air conditioning, driver's door remote entry

318A

- All the features included in Package 317A
- Group 2: All-door remote entry with perimeter anti-theft, power door locks, power windows and dual power mirrors

Specifications

ENGINE

Type	Overhead-cam in-line 4-cyl. with on-board diagnostics
Valves	8
Displacement	2.0L
Horsepower (SAE net)	110 @ 5,000 rpm
Torque (SAE net lb.-ft.)	125 @ 3,750 rpm
Engine control	EEC-V computer
Fuel system	Sequential electronic fuel injection
Induction system	Split-port
Spark plugs	Platinum tipped
Scheduled tune-up interval	100,000 miles*

TRANSAXLE

Type	5-speed manual overdrive; 4-speed automatic overdrive optional
------	---

CHASSIS

Body type	Unitized
Bodysides	One-piece stamping (sedan only)
Suspension, front	Independent system with gas-pressurized MacPherson struts; stabilizer bar; isolated engine subframe
Suspension, rear	Independent quadralink system; stabilizer bar
Steering	Power rack-and-pinion; 17.0:1 overall ratio
Brakes	4-wheel hydraulic, power front disc/rear drum (anti-lock system optional)

Tires	P185/65R14 BSW
-------	----------------

Fuel capacity	12.7 gallons
---------------	--------------

*Under normal driving conditions with routine fluid and filter changes.

Technical INFORMATION

P = Preferred Equipment Package Item
S = Standard O = Optional

Escort LX LX
315A 317A 318A

EXTERIOR FEATURES

Aerodynamic fixed-aim headlamps	S	S	S
Color-keyed bumpers	S	S	S
Black bodyside protection moldings	S	-	-
Color-keyed bodyside protection moldings	-	S	S
Water management windshield molding	S	S	S
Dual outside mirrors	S	S	S
Lower bodyside and underbody PVC coating	S	S	S
Rear reflex applique (sedan)	S	S	S
Argent wheels with bright half caps	S	-	-
Semi-styled steel wheels with full luxury "bolt on" wheel covers	-	S	S
Spoke swirl aluminum wheels	-	O	O

COMFORT/CONVENIENCE FEATURES

Dual power mirrors	-	O	P
Power steering	S	S	S
CFC-free air conditioning system	O	P	P
Integrated panel with controls for climate and sound system	S	S	S
Soft-feel vinyl door trim with cloth inserts, armrest, front integral map pocket and speaker grille	S	S	S
Center console with cassette storage, forward cup holders, rear bin/cup holder	S	S	S
Glove box	S	S	S
Digital clock	S	S	S
Passenger-side visor mirror	-	S	S
Headlamps-on warning chime	S	S	S
Full 12-ounce carpeting	S	S	S
Window-shade-type cargo area cover (wagon)	-	S	S
Low-liftover trunk design (sedan)	S	S	S
Full trunk trim	S	-	-
Luxury trunk trim (sedan); luxury cargo area trim (wagon)	-	S	S
Solar tinted glass; side window demisters; flow-through 4-speed heater/defroster with rear ducts	S	S	S
2-speed wipers with variable interval; temperature gauge; trip odometer	S	S	S
Low fuel warning light	S	S	S
Battery saver	S	S	S
Inside hood release	S	S	S
Front and rear floor mats	O	O	O

Escort LX LX
315A 317A 318A

SAFETY FEATURES

Driver and passenger air bag SRS, manual 3-point front lap/shoulder belt system with adjustable D-ring, lap/shoulder outside rear safety belts, center rear seat lap belt	S	S	S
Anti-lock braking system (ABS)	O	O	O
Integrated child safety seat (includes full-fold rear seat; available in Medium Graphite or Saddle)	-	O	O
Child safety rear door locks	S	S	S
Rear window defroster	O	P	P

SEATING

Low-back cloth and vinyl bucket seats, full-fold rear seat	S	-	-
Low-back luxury cloth bucket seats and split/fold (60/40) rear seat	-	S	S

GROUPS

Group 1: Includes CFC-free air conditioning and driver's door remote entry system with 2 key fobs	-	P	P
Group 2: Includes all-door remote entry with 2 key fobs and perimeter anti-theft system, power door locks, power windows and dual power mirrors	-	O	P
Group 3: Includes speed control, tachometer, tilt and convenience group (tilt steering column, dual map lights, dual visor-cover mirrors)	-	O	O
Wagon group: Includes deluxe luggage rack and rear window wiper/washer (wagon only)	-	O	O
Sport package: Includes 14" aluminum wheels, trunk spoiler, bright oval-tip exhaust, unique sport seats with rear integrated head restraints, tachometer and sport graphic (4-door sedan only)	-	O	O
Automatic transaxle	O	O	O
Engine block heater	O	O	O

SOUND SYSTEMS

Four premium speakers (two standard and two premium with wagon)	S	S	S
AM/FM stereo radio	S	S	S
AM/FM stereo radio with cassette tape	O	O	O
Premium sound audio system with upgraded amplifier AM stereo/FM stereo cassette tape and trunk-mounted 6-disc changer (sedan only)	-	O	O

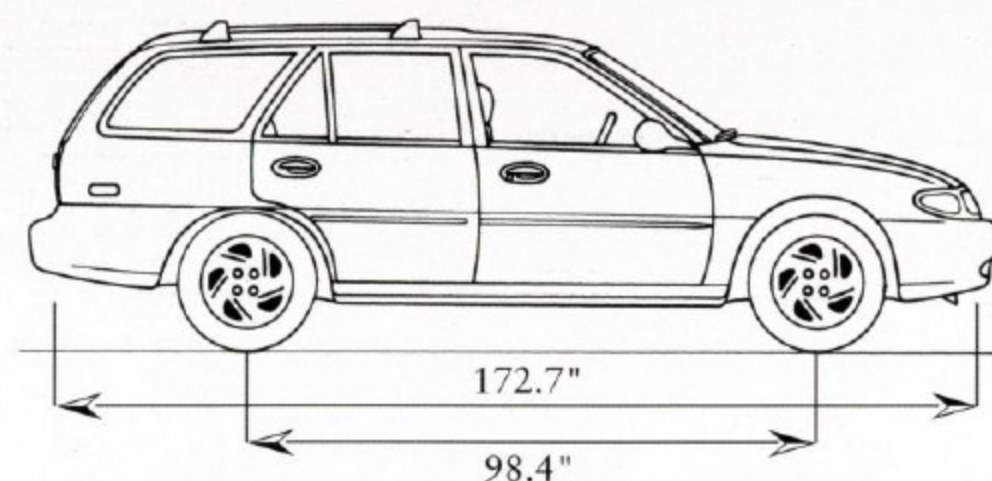
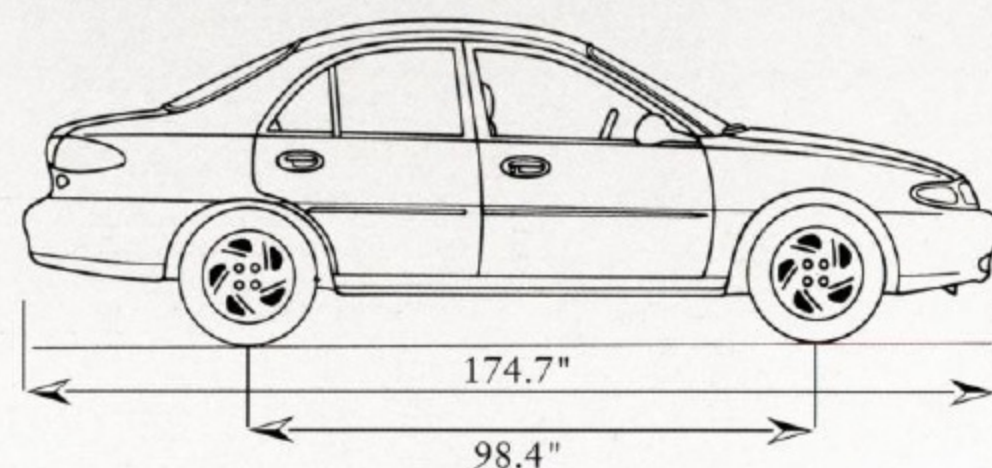
Note: Preferred Equipment Packages subject to change.

Dimensions, Options

Dimensions

	SEDAN	WAGON
Wheelbase	98.4"	98.4"
Length	174.7"	172.7"
Height	53.3"	53.9"
Width	66.2"	66.2"
Front tread	56.5"	56.5"
Rear tread	56.5"	56.5"
Front head room	39.0"	38.7"
Rear head room	36.7"	39.1"
Front leg room	42.5"	42.5"
Rear leg room	34.0"	34.0"
Front shoulder room	51.6"	51.6"
Rear shoulder room	52.1"	52.1"
Trunk or cargo volume (cu. ft.)	12.8	63.4*
Passenger capacity	5	5

*With rear seat back(s) folded down.



Standard argent wheels with half cap LX semi-styled wheel with full luxury "bolt on" wheel cover Optional spoke swirl aluminum wheel

Options

Dual power mirrors are optional with LX Preferred Equipment Package 317A and are also part of Group 2, which is included in LX Package 318A.



The tilt steering wheel is optional as part of Group 3, available with select LX Preferred Equipment Packages.

The optional wagon group includes a rear wiper/washer for convenience and safety. There's also a handy luggage rack, ideal for families on the go.



Available from your Ford dealer, this convenient console offers extra storage space for all kinds of articles as well as a comfortable padded armrest.

Among the quality accessories available from your Ford Dealer is a handy bicycle rack that's specifically designed for Ford vehicles. Adapters can accommodate two bikes or four pairs of skis. Ideal for active lifestyles.



Colors and Trims.

Escort Colors



Exterior Paint Colors

Escort Sedan

Silver Frost Clearcoat Metallic
Pacific Green Clearcoat Metallic
Black Satin Clearcoat
Vibrant White Clearcoat

Escort LX Sedan and Wagon

Treador Red Clearcoat Metallic
Bright Red Clearcoat
Royal Plum Clearcoat Metallic
Boysenberry Blue Clearcoat Metallic
Black Satin Clearcoat
Mocha Frost Clearcoat Metallic
Pacific Green Clearcoat Metallic
Aquamarine Frost Clearcoat Metallic
Silver Frost Clearcoat Metallic
Vibrant White Clearcoat

Note: the sport package is available with any LX exterior color.

Interior Trim Colors

Medium Graphite Willow Green Saddle

Ownership Experience

ROADSIDE ASSISTANCE PROGRAM

Every new Ford includes the assurance of a no-cost, 24-hour emergency Roadside Assistance Program provided during the 3-year/36,000-mile bumper-to-bumper warranty. Ask your dealer for complete details on this program which includes such services as fuel delivery, tire change, jump start, or even help when you're locked out of your car.



Ford Credit offers a wide variety of financing and leasing programs to qualified buyers which can be arranged right at the dealership. Ask your Ford Dealer for the facts on these programs.



Optional Ford Extended Service Plans go beyond the basic 3-year/36,000-mile warranty. Ask your dealer for complete details on the optional plans and for a copy of the limited warranty.

DEALER-INSTALLED ACCESSORIES

Your Ford Dealer offers a variety of quality Ford-brand accessories that meet or exceed our strict specifications.

PRODUCT CHANGES AND OPTIONS AVAILABILITY

Following publication of the catalog, certain changes in standard equipment, options, prices and the like, or product delays, may have occurred which would not be included in these pages.

Ford Division reserves the right to change product specifications at any time without incurring obligations.

Options shown or described are available at extra cost and may be offered only in combination with other options or subject to additional ordering requirements or limitations.

For more information, visit our web site at <http://www.ford.com>



BUILDING A COMPLETE LINE-UP OF QUALITY CARS AND TRUCKS



Aspire



Explorer



Escort



Windstar



Probe



Aerostar



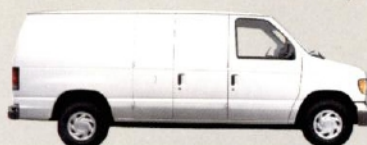
Mustang



Club Wagon



Contour



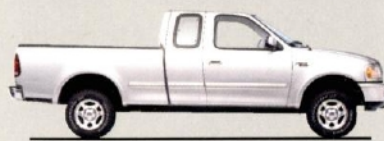
Econoline



Thunderbird



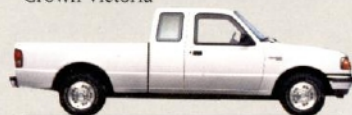
Taurus



F-Series



Crown Victoria



Ranger



Expedition coming September '96